



220 E. General Robinson St.
Pittsburgh, PA 15212
412-321-3217 412-321-6108 fax

156 N. Washington Road
Apollo, PA 15613
724-727-2772
724-727-2033 fax

4589 State Route 422
Pulaski, PA 16143
724-964-8822
724-964-8823 fax

4636 Benedum Drive
Bridgeport, WV
304-592-3217
304-592-3591 fax

B

BACKER ROD 12
BASF
MasterSeal NP 1 6

C

CONFILM
See MasterKure ER 50 6
CRAFICO
RoadSaver 221 5

D

DYMONIC FC 2

E

EXPANSION JOINT - FIBRE 7
EXPANSION JOINT - RUBBER 9

I

ITP 11, 12, 13
Standard Backer Rod 11

J

J&K FOAM FABRICATING
Expansion Joint 9
JOINT MATERIAL 9

M

MASTERSEAL NP 1 6

P

PROFLEX
Vinyl Expansion Joint 10

R

REFLEX
Rubber Expansion 9
ROADSAVER 221 5
RUBBER EXPANSION 9

S

SNAP-CAP 8
SPECTREM® 800 4
SPEED-E-JOINT 8

T

TREMCO
Dymonic FC 2
Spectrem 800 4
Vulkem 45SSL 3

V

VINYL EXPANSION 10
VULKEM 45SSL 3

W

W. R. MEADOWS
Expansion Joint 7
Snap-Cap 8
Speed-E-Joint 8





220 E. General Robinson St.
Pittsburgh, PA 15212
412-321-3217 412-321-6108 fax

156 N. Washington Road
Apollo, PA 15613
724-727-2772
724-727-2033 fax

4589 State Route 422
Pulaski, PA 16143
724-964-8822
724-964-8823 fax

4636 Benedum Drive
Bridgeport, WV
304-592-3217
304-592-3591 fax

DYMONIC FC



Fast-Curing, Low-Modulus, Silane End-Capped, Polyurethane Hybrid Sealant

Dymonic® FC is a low-modulus, one-component, moisture-cure, polyurethane hybrid sealant. Dymonic FC is formulated with proprietary silane end-capped polymer technology. Dymonic FC provides the best performance characteristics of polyurethane and silicone sealants.

PRIMARY APPLICATIONS:

Dymonic FC is a durable, flexible, sealant that offers excellent performance in moving joints and exhibits tenacious adhesion once fully cured. Typical applications for Dymonic FC include expansion and control joints, precast concrete panel joints, perimeter caulking (windows, door, panels), EIFS, aluminum, masonry and vinyl siding.

FEATURES / BENEFITS:

Dymonic FC is fast curing with a skin time of 60 minutes and a tack-free time of 3-4 hours to significantly reduce dirt pickup. It will not green crack due to early movement and has an exceptional movement capability of $\pm 35\%$. Dymonic FC is also low-VOC, paintable and will not crack or craze under UV exposure.

PACKAGING:

10.1 oz (300 mL) cartridges; 20 oz (600 mL) sausages.

SPECIFICATIONS / COMPLIANCES:

Dymonic FC meets or exceeds the requirements of the following specifications:

- ASTM C920 Type S, Grade NS, Class 35, Use NT, M, A and O
- ASTM C1248
- U.S. Federal Specification TT-S-00230C Class A, Type II
- CAN/CGSB 19.13-M87

JOINT DESIGN:

Dymonic FC may be used in any joint designed in accordance with accepted architectural/engineering practices. Joint width should be 4 times anticipated movement, but not less than $\frac{1}{4}$ in.

JOINT BACKING:

Closed cell or reticulated polyethylene backer rod is recommended as joint backing to control sealant depth and to ensure intimate contact of sealant with joint walls when tooling. Where depth of joint will prevent the use of backer rod, an adhesive backed polyethylene tape (bond breaker tape) should be used to prevent three-sided adhesion. All backing should be dry at time of sealant application.

PennDOT Approved



220 E. General Robinson St.
Pittsburgh, PA 15212
412-321-3217 412-321-6108 fax

156 N. Washington Road
Apollo, PA 15613
724-727-2772
724-727-2033 fax

4589 State Route 422
Pulaski, PA 16143
724-964-8822
724-964-8823 fax

4636 Benedum Drive
Bridgeport, WV
304-592-3217
304-592-3591 fax

VULKEM 45SSL



One-Part, Semi-Self-Leveling Sealant

Vulkem 45SSL is a one-part, moisture-curing, low-modulus polyurethane sealant. It provides exceptional wear and tear resistance required in high traffic areas.

PRIMARY APPLICATIONS:

Vulkem 45SSL is formulated for use in expansion joints in sidewalks, swimming pool decks, plazas, floors and any other horizontal surface with slopes up to 6% (e.g. 1 in. rise for every 16 in. run).

FEATURES / BENEFITS:

Vulkem 45SSL is a traffic rated, pourable, semi-self-leveling sealant with exceptional primerless adhesion and movement capability. Vulkem 45SSL is suitable for continuous immersion in non-chlorinated water and can be applied to damp and green concrete. The technology in Vulkem 45SSL provides the sealant with greater UV resistance and will not out gas.

PACKAGING: Quart (850mL) cartridges.

SPECIFICATIONS / COMPLIANCES:

Vulkem 45SSL meets or exceeds the requirements of the following specifications:

ASTM C920, Type S, Grade P, Class 35, Use T, M, A, O and I (Class 2).

JOINT DESIGN:

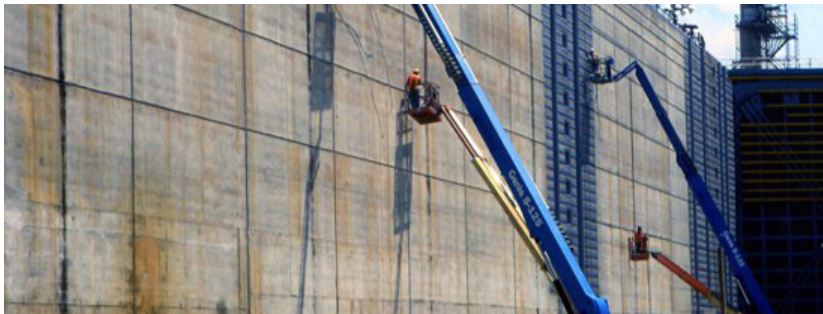
Vulkem 45SSL may be used in any horizontal joint designed in accordance with accepted architectural/engineering practices. Joint width should be 4 times anticipated movement, but not less than 1/4 in. (6mm).

JOINT BACKING:

Closed cell or reticulated polyethylene backer rod is recommended as joint backing to control sealant depth and to ensure intimate contact of sealant with joint walls. Backer rod needs to be properly friction fitted for use with self-leveling sealants to prevent leak out of sealant during cure. Where depth of joint will prevent the use of backer rod, an adhesive backed polyethylene tape (bond breaker tape) should be used to prevent three-sided adhesion. All backing should be dry at time of sealant application.

DAMP/GREEN CONCRETE:

Vulkem 45SSL can be applied to green concrete 24 hours after the forms have been removed. All concrete sealers or curing agents need to be removed by grinding before applying sealant. The concrete can be damp during application, but do not apply sealant where there is standing water in or close to the joints. It is recommended to catalyze with water when applying sealant on damp surfaces.



**McAlpine Locks and Dam
Louisville, KY**



220 E. General Robinson St.
Pittsburgh, PA 15212
412-321-3217 412-321-6108 fax

156 N. Washington Road
Apollo, PA 15613
724-727-2772
724-727-2033 fax

4589 State Route 422
Pulaski, PA 16143
724-964-8822
724-964-8823 fax

4636 Benedum Drive
Bridgeport, WV
304-592-3217
304-592-3591 fax

SPECTREM® 800



Low Modulus, Silicone Highway and Parking Structure Sealant

Spectrem 800 is a low modulus, high performance, one-part, gun grade, silicone parking structure and highway joint sealant.

PRIMARY APPLICATIONS:

Spectrem 800 has exceptional physical properties making them ideal for sealing the most demanding dynamically moving joints and horizontal applications. Formulated for highway, airport, bridge joints, and parking structures where high movement occurs.

PACKAGING:

Quart cartridges.

JOINT DESIGN:

May be used in any joint design in accordance with accepted highway/ engineering practice. Spectrem 800 should be no thicker than 1/2" (12.7mm) and no thinner than 1/4" (6.4mm). Sealant accepts +100%/-50% of installed width; however, Tremco recommends joint movement design $\pm 25\%$ movement. Sealant surface should be recessed 3/8-1/2" below pavement surface.



PennDOT Approved



220 E. General Robinson St.
Pittsburgh, PA 15212
412-321-3217 412-321-6108 fax

156 N. Washington Road
Apollo, PA 15613
724-727-2772
724-727-2033 fax

4589 State Route 422
Pulaski, PA 16143
724-964-8822
724-964-8823 fax

4636 Benedum Drive
Bridgeport, WV
304-592-3217
304-592-3591 fax

ROADSAVER 221 SEALANT



Crafco RoadSaver 221 sealant is a hot-applied asphalt based product used to seal and fill cracks and joints in asphalt or portland cement concrete pavements in moderate to cold climates. RoadSaver 221 is supplied in solid form which when melted and properly applied forms a resilient, adhesive and flexible compound that resists cracking in the winter and is resistant to flow and pick-up at summer temperatures. RoadSaver 221 is used in highway, street, and airfield pavements and is applied to pavement cracks and joints using either pressure feed melter applicators or pour pots. At application temperature RoadSaver 221 is a free flowing, self-leveling product. RoadSaver 221 is a widely used, excellent performing sealant that has been a quality Crafco product for 25 years. VOC = 0 g/l.

SPECIFICATIONS / COMPLIANCES:

RoadSaver 221 meets all requirements of ASTM D6690 (AASHTO M324), Type II, "Joint and Crack Sealants, Hot-Applied, for Concrete and Asphalt Pavements", (formerly ASTM D3405 and ASHTO M301). It also exceeds requirements of ASTM D6690 (AASHTO M324), Type I, (formerly ASTM D1190, AASHTO M173), and Federal Specification SS-S-164.





220 E. General Robinson St.
Pittsburgh, PA 15212
412-321-3217 412-321-6108 fax

156 N. Washington Road
Apollo, PA 15613
724-727-2772
724-727-2033 fax

4589 State Route 422
Pulaski, PA 16143
724-964-8822
724-964-8823 fax

4636 Benedum Drive
Bridgeport, WV
304-592-3217
304-592-3591 fax

MASTERSEAL® NP 1™

Formerly Sonolastic NP1



The Chemical Company

One-component, elastomeric, gun-grade polyurethane sealant

MasterSeal NP 1 is a one-component, high-performance, non-priming, gun-grade, elastomeric polyurethane sealant. It requires no mixing and typically requires no priming to bond to many materials, including concrete and masonry.

FEATURES / BENEFITS:

- One-component formula requires no mixing, helping to reduce labor costs
- Joint movement capability $\pm 35\%$ provides excellent flexibility for keeping moving joints weathertight
- Easy to gun and tool, speeding up application and making neater joints
- Available in ProPaks, reducing jobsite waste, lowering disposal costs
- 12 standard colors to match a wide variety of common substrates
- No primer required for most construction materials lowering installation costs
- Weather resistant for long-lasting weathertight seals
- Wide temperature application range makes MasterSeal NP 1 suitable for all climates
- Compatible with non-rigid coatings and can be painted
- Superior holding power for long-lasting roof tile installation
- UL listed; Passes 4-hour, 4-inch, fire and hose stream test when used with Ultra Block or mineral wool
- Suitable for water immersion with documented performance in wet areas
- Meets VOC requirements in all 50 states

APPLICATIONS:

- Interior and exterior
- Above and below grade
- Immersed in water
- Expansion joints
- Panel walls
- Precast units
- Aluminum & wood window frames
- Roofing
- Fascia & Parapets
- Vinyl siding
- Store front assemblies

SUBSTRATES:

- Concrete
- Masonry
- Aluminum
- Wood
- Clay & concrete roof tiles
- Stucco
- Natural stone



COMPLIANCES:

- ASTM C 920, Type S, Grade NS, Class 35, Use NT, M, A, T, O* and I
- Federal Specification TT-S- 00230C, Type II, Class A
- Corps of Engineers CRD-C- 541, Type II, Class A
- Canadian Specification CAN/CGSB-19.13-M87
- Classification MCG-2-25-A-N, No. 81026
- CFI accepted
- USDA compliant for use in meat and poultry areas
- Underwriters Laboratories Inc.® classified (fire resistance only)
- ISO 11600-F-25LM

PennDOT Approved



220 E. General Robinson St.
 Pittsburgh, PA 15212
 412-321-3217 412-321-6108 fax

156 N. Washington Road
 Apollo, PA 15613
 724-727-2772
 724-727-2033 fax

4589 State Route 422
 Pulaski, PA 16143
 724-964-8822
 724-964-8823 fax

4636 Benedum Drive
 Bridgeport, WV
 304-592-3217
 304-592-3591 fax

FIBRE EXPANSION JOINT

Multi-Purpose, Expansion-Contraction Joint Filler



FIBRE EXPANSION JOINT is composed of cellular fibers securely bonded together and uniformly saturated with asphalt to assure longevity. Wherever a cost-effective joint filler is required, FIBRE EXPANSION JOINT meets the need. Manufactured and marketed by W. R. Meadows since the early 1930s, FIBRE EXPANSION JOINT is backed by over 80 years of proven application experience. FIBRE EXPANSION JOINT is versatile, resilient, flexible and non-extruding. When compressed to half of its original thickness, it will recover to a minimum of 70% of its original thickness. FIBRE EXPANSION JOINT will not deform, twist, or break with normal on-the-job handling.

APPLICATIONS:

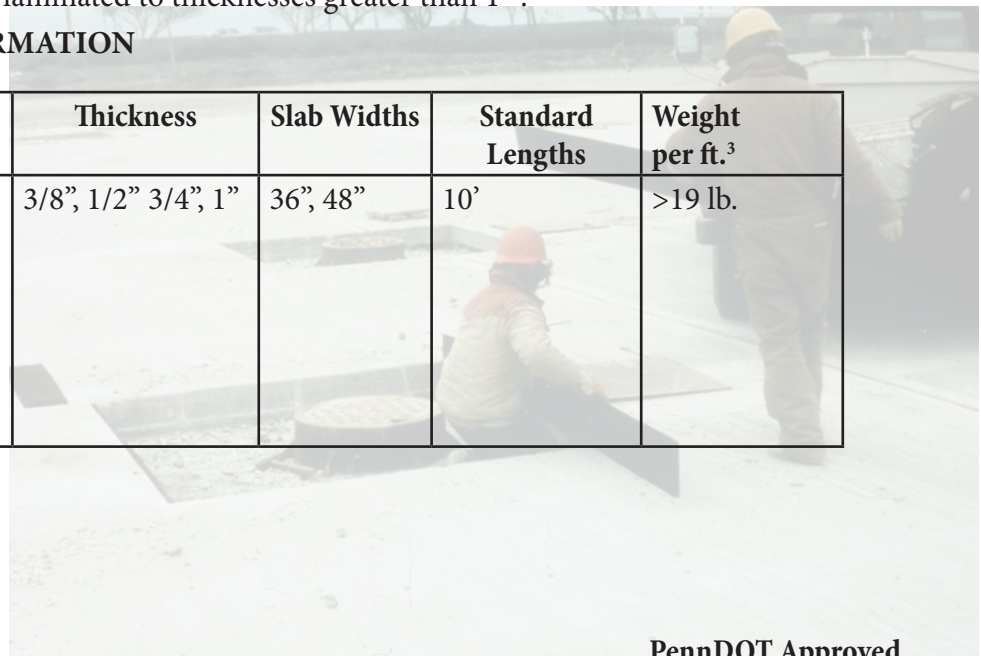
FIBRE EXPANSION JOINT is ideal for use on highways, streets, airport runways, sidewalks, driveways, flatwork, and scores of commercial and industrial applications subject to pedestrian and vehicular traffic.

FEATURES / BENEFITS:

- Provides the ideal product for the majority of all expansion/contraction joint requirements.
- Non-extruding ... versatile ... offers a minimum 70% recovery after compression.
- This tough, lightweight, easy-to-use, semi-rigid joint filler is available in strips and shapes fabricated to your requirements.
- Easy to cut ... dimensionally stable ... not sticky in summer or brittle in winter.
- Provides neat, finished joints requiring no trimming.
- Often copied ... but never equaled.
- Remains the standard of the industry today ... with over 80 years of proven and satisfactory performance.
- Can be punched for dowel bars and laminated to thicknesses greater than 1" .

SPECIFICATIONS AND SIZE INFORMATION

Conforms to or meets:	Thickness	Slab Widths	Standard Lengths	Weight per ft. ³
<ul style="list-style-type: none"> • AASHTO M 213 • ASTM D 1751 • FAA Specification Item P-610-2.7 • Corps of Engineers CRD-C 508 • HH-F-341 F, Type 1 	3/8", 1/2" 3/4", 1"	36", 48"	10'	>19 lb.



PennDOT Approved



156 N. Washington Road
 Apollo, PA 15613
 724-727-2772
 724-727-2033 fax

220 E. General Robinson St.
 Pittsburgh, PA 15212
 412-321-3217 412-321-6108 fax

4589 State Route 422
 Pulaski, PA 16143
 724-964-8822
 724-964-8823 fax

4636 Benedum Drive
 Bridgeport, WV
 304-592-3217
 304-592-3591 fax

PLASTIC JOINT MATERIALS

SPEED-E-JOINT® SNAP-CAP®



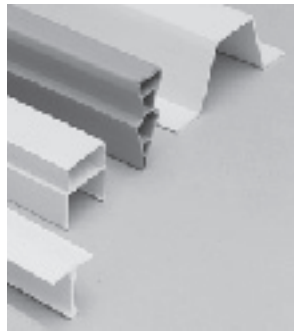
SPEED-E-JOINT

Preformed Contraction Joint

SPEED-E-JOINT consists of two solid pieces that have been pre-assembled for easy handling and installation. SPEED-E-JOINT offers an ideal solution to controlling cracks in concrete. It is a rigid preformed contraction joint that produces a straight-line crack on the surface of concrete slabs and locks into the aggregate just below the surface. SPEED-E-JOINT is strong, economical, and eliminates waste in providing straight lines. It is quick and easy to install. The top section pulls free once the joint has been placed correctly in the wet concrete.

Furnished in three depths: 1", 1.5" and 2" (25.4 mm, 38.1 mm and 50.8 mm). Standard length is 10'.

To install SPEED-E-JOINT, press a straight edge cutting tool into the wet concrete to part the aggregate in a straight line. Place SPEED-E-JOINT into the separation until the top segment lays on the surface of the wet concrete. Remove the top. Float concrete to fill all voids adjacent to SPEED-E-JOINT and finish in the normal manner.

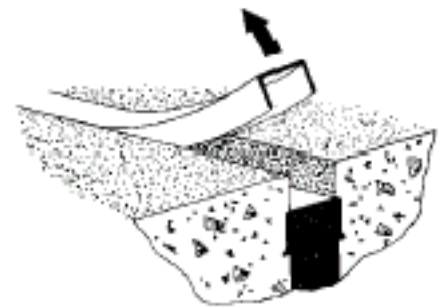


SNAP-CAP

Expansion Joint Cap

SNAP-CAP provides a time- and cost-saving method for forming straight, uniform, and debris-free joints of the proper configuration, ready to seal. The top of SNAP-CAP pulls free and can be discarded. The exposed concrete surfaces assure balanced adherence to the sides. It is ideal for both horizontal and vertical concrete projects. SNAP-CAP is available in four widths.

To install, slide SNAP-CAP over the top of the expansion joint. Place the concrete and screed to finish grade as usual. When concrete is cured, insert a screwdriver through the top of SNAPCAP, pull free and discard. The joint is ready to seal.



TYPE	WIDTH	DEPTH	LENGTH
SPEED-E-JOINT	N/A	1" (25.4 mm) 1 1/2" (38.1 mm) 2" (50.8 mm)	10' (3.05 m)
SNAP-CAP	3/8" (9.53 mm) 1/2" (12.7 mm) 3/4" (19.05 mm) 1" (25.4 mm)	1/2" (12.7 mm)	10' (3.05 m)



156 N. Washington Road
Apollo, PA 15613
724-727-2772
724-727-2033 fax

220 E. General Robinson St.
Pittsburgh, PA 15212
412-321-3217 412-321-6108 fax

4589 State Route 422
Pulaski, PA 16143
724-964-8822
724-964-8823 fax

4636 Benedum Drive
Bridgeport, WV
304-592-3217
304-592-3591 fax

RUBBER EXPANSION JOINT MATERIAL



Meets or exceeds the performance requirements of ASTM D1751-97 & D1752-84

Reflex® Rubber Expansion Joint Material for concrete is a processed board product formed by blending granular crumb rubber derived from discarded tires and various low density polymer components. Reflex® Rubber is pre-molded under heat and pressure and far more durable than current alternatives.

Reflex® Rubber is suitable for use as expansion or control joint in a wide variety of concrete construction projects such as roadways, sidewalks, driveways, flooring, parking lots, patios, and curbs.

Go Green! Reflex® Rubber is made of 100% recycled materials!

REFLEX® Rubber Expansion Joint Material for Concrete is a processed board product formed by blending granular crumb rubber derived from discarded tires and various low density polymer components. Pre-molded under heat and pressure, REFLEX® is far more durable than current alternatives.

J&K FOAM FABRICATING, INC. EXPANSION JOINT

Non-Crosslink Polyethylene expansion joint filler can be used in all standard concrete construction, such as highways, runways, parking garages, driveways, sidewalks, and floor slabs.

Non-Crosslink Polyethylene can also be used as a buffer between dissimilar materials such as columns, manhole covers, and adjacent constructions.

FEATURES:

- Extruded from a high quality, closed cell Non-Crosslink polyethylene foam
- Tear-Off Strip – Standard on each roll but can be special ordered without
- Flexibility – Will not break or crack when used around curves or columns
- Lightweight – Approximately 10 times lighter than traditional expansion joint products
- Accepted – Currently used by both residential and commercial contractors
- Durable – With near zero water absorption, non- crosslink polyethylene will not rot over time
- Economical – Easily cut and handled on any jobsite



220 E. General Robinson St.
Pittsburgh, PA 15212
412-321-3217 412-321-6108 fax

156 N. Washington Road
Apollo, PA 15613
724-727-2772
724-727-2033 fax

Right Pointe

4589 State Route 422
Pulaski, PA 16143
724-964-8822
724-964-8823 fax

4636 Benedum Drive
Bridgeport, WV
304-592-3217
304-592-3591 fax

PROFLEX

PROFLEX VINYL EXPANSION JOINT

PROFLEX Vinyl Expansion Joint is manufactured from 100% recycled vinyl with fabric strand reinforcement that is obtained from the automotive and roofing industries. PROFLEX is an extremely durable and flexible product that is easy to handle and will not rot or become brittle when exposed to the weather. Because of its flexibility, it will not break, split or crack when exposed to the elements.

PROFLEX is UV stable, does not use adhesive binders in the manufacturing process, and can be stored outside.

PROFLEX Vinyl Expansion Joint is suitable for use with a wide variety of concrete construction projects. It is also ideal for many sizes of concrete slab work, as well as other flatwork applications. Because of its flexibility, PROFLEX can be used as a radius filler as well as a concrete form.

THICKNESS: ¼”





220 E. General Robinson St.
Pittsburgh, PA 15212
412-321-3217 412-321-6108 fax

156 N. Washington Road
Apollo, PA 15613
724-727-2772
724-727-2033 fax

4589 State Route 422
Pulaski, PA 16143
724-964-8822
724-964-8823 fax

4636 Benedum Drive
Bridgeport, WV
304-592-3217
304-592-3591 fax

BACKER ROD

Industrial Thermo Polymers Limited



Standard

Basic Use:

ITP Standard Backer Rod is an ideal compressible and non-absorbent backup material that is inserted into a joint to control sealant depth. This creates a backstop to facilitate accurate sealant tooling and proper sealant wetting of the joint surfaces, yielding a quality bond breaker between the backup material and the sealant. ITP Standard Backer Rod can also be used as a temporary joint seal.

Specific Uses:

ITP Standard Backer Rod is suitable for glazing installations, window and door applications, expansion joints, curtain wall joints, partitions, log construction, pavement jobs, repairs, precast units and copings.

Compatibility:

ITP Standard Backer Rod is compatible with butyl, polysulfide, acrylic polyurethane, silicone and most other cold applied sealant compositions.



PennDOT Approved



220 E. General Robinson St.
Pittsburgh, PA 15212
412-321-3217 412-321-6108 fax

156 N. Washington Road
Apollo, PA 15613
724-727-2772
724-727-2033 fax

4589 State Route 422
Pulaski, PA 16143
724-964-8822
724-964-8823 fax

4636 Benedum Drive
Bridgeport, WV
304-592-3217
304-592-3591 fax

BACKER ROD

Industrial Thermo Polymers Limited



104 Soft Type

Basic Use:

TP Soft Type Backer Rod is a soft, pliable and non-gassing backup material that is inserted into a joint to control sealant depth. This creates a backstop to facilitate proper sealant tooling, yielding a quality bond breaker between the backup material and the sealant. ITP Soft Type Backer Rod can also be used as a temporary joint seal.



Specific Uses:

ITP Soft Type Backer Rod is suitable for specialty applications where standard backer rods are not appropriate. They are ideal for irregular joint applications, particularly where free flowing and self-leveling sealants are employed. ITP Soft Type Backer Rods can also be used in place of most standard backer rods, and are highly recommended for applications in which bubbling is a critical concern.





220 E. General Robinson St.
Pittsburgh, PA 15212
412-321-3217 412-321-6108 fax

156 N. Washington Road
Apollo, PA 15613
724-727-2772
724-727-2033 fax

4589 State Route 422
Pulaski, PA 16143
724-964-8822
724-964-8823 fax

4636 Benedum Drive
Bridgeport, WV
304-592-3217
304-592-3591 fax

BACKER ROD

Industrial Thermo Polymers Limited



Hot Rod XL

Basic Use:

HOT ROD XL is an ideal compressible and non-absorbent backup material that is inserted into a joint to control sealant depth. This creates a backstop to facilitate accurate sealant tooling and proper sealant wetting of the joint surfaces, yielding a quality bond breaker between the backup material and the sealant. HOT ROD XL can also be used as a temporary joint seal.



Specific Uses:

HOT ROD XL is suitable for use in contraction and expansion joints of concrete highways, runways, driveways and parking lots.

Compatibility:

HOT ROD XL is compatible with most hot pour sealants, rubber-asphalt and coal tar-rubber polymer thermoplastic compounds up to a maximum temperature of 410°F.



PennDOT Approved